

App·Control

Vision Plug-In



USER GUIDE



GenevaLogic

ACTIVE TEACHING SYSTEMS

Notice

Copyright© 2006, GenevaLogic. All rights reserved.

Document Date: April 4, 2006

Document Version: 1.0.3

The content in this document represents the current view of GenevaLogic as of the date of publication. Because GenevaLogic responds continually to changing market conditions, this document should not be interpreted as a commitment on the part of GenevaLogic. GenevaLogic cannot guarantee the accuracy of any information presented after the date of publication.

Vision is a registered trademark of GenevaLogic. Accel, App-Control, Plan-It, Pointer, Print-Limit, Protect-On, Surf-Lock, GenevaLogic and the GenevaLogic logo are trademarks of GenevaLogic.

Microsoft, Windows, and the Windows logo are trademarks, or registered trademarks of Microsoft Corporation in the United States and/or other countries. All other brand names are trademarks or registered trademarks of their respective companies.

Information in this document is subject to change without notice. For the latest documentation, visit our Web site at www.genevalogic.com.

North America

info.us@genevalogic.com
15725 SW Greystone Court, Suite 105
Beaverton, OR 97006 USA
Phone: 503-352-3599
Fax: 503-352-3413

All Other Locations

info.ch@genevalogic.com
Unterdorfstrasse 66
CH-4934 Madiswil Switzerland
Phone: +41-(0)62-957-70-40
Fax: +41-(0)62-957-70-50

Contents

Welcome to App-Control	1
Technical Support	2
Install App-Control	3
Installation Options	3
System Requirements	4
Manual Installation	4
Remote Installation with MSI	5
Set Up App-Control	6
Add Applications to the App-Control Menu	6
Remove Applications from the App-Control Menu	8
View App-Control Shortcuts	8
Working with Student Computers	9
Start an Application on Student Computers	9
Turn Off Kiosk Mode	10
Close All Applications Running on a Student Computer	10
Start an Application Using the Run Command	11
Share a Document with Your Students	12
Customize App-Control	14
Change the Icon Associated with an Application	14
Change the Window Size of an Application	15
Rename a Program in the App-Control Menu	16

Welcome to App-Control

This guide explains how to install App-Control and use it to manage the software programs your students use during classtime. App-Control offers a number of features to give your students only the tools they need without any distractions:

- Start and close applications on student computers from your computer.
- Share documents and Web sites with your class during instruction.
- Force student computers to run selected applications in a special locked mode, known as Kiosk mode. This prevents students from using other programs during classtime.

Technical Support

GenevaLogic offers a number of resources to help you make the most of App-Control. When you need additional support, try one of the following.

Refer to App-Control Help

App-Control Help offers information about common features. You can open Help from the toolbar on the dashboard.

Visit Our Web Site

Our Web site, www.genevalogic.com, offers a list of support resources, including a knowledge base, user documentation, and software updates.

Contact Our Technical Support Team

You can contact Technical Support through by phone, e-mail, or our Web site.

In North America

Phone: 866-725-7803 (toll free)

E-mail: support.us@genevalogic.com

Web: www.genevalogic.com

Our hours are 7:30 AM–4:30 PM
Pacific Time.

All Other Locations

Outside of North America, the technical support of our products is provided through our international network of distributors and resellers. Please contact the local GenevaLogic distributor in your area. For a list of distributors, visit our international support page at www.genevalogic.com.

Install App-Control

When you install App-Control, the setup program replaces the **Run Application** button on the Vision toolbar with the **App-Control** button. The Run Application feature is standard with Vision and its functionality, using the run command to start applications on student machines, is included in App-Control.



Run Application button



App-Control button

Installation Options

There are a number of ways to install App-Control on your classroom computers. Use the table below to determine which installation method is best for you.

Installation Tool	Intended Use
App-Control Installer	Manual installations; one computer at a time.
Accel	Remote installations; for use with GenevaLogic products Vision6, Surf-Lock, Pointer, and App-Control. Note: For more information about Accel, refer to the <i>Accel User Guide</i> or the <i>GenevaLogic Product Installation Guide</i> .
Microsoft Windows Installer (MSI)	Remote installations; for use with systems that support installations via command line, such as Microsoft SMS, Altiris Deployment Solution.

System Requirements

Before you begin to install App-Control, verify that your network and classroom computers meet all of the product system requirements.

- Your classroom computers must have Vision6 installed.
- You must also have a valid serial number to activate a program. (You can install a 30-day evaluation version without a serial number).

Manual Installation

After you have verified that your computer meets the system requirements, you can begin to install App-Control.

1. Log on to the computer as an administrator.
2. Quit all programs.
3. Quit all virus protection utilities or filters.
4. Run the App-Control Setup program.
 - If you are installing from a file that you downloaded, open the folder where you saved the Setup program, and then double-click **App-Control_Setup.exe**.
 - If you are installing from a CD, insert the CD in the proper drive, point to **App-Control**, and then select **Install App-Control**.
5. Click **Next** to start the installation.
6. Read and accept the licensing agreement.
7. The wizard guides you through the installation. Follow the instructions on the screen.
8. After you complete the installation, restart the computer and any virus protection utilities that you use.

Remote Installation with MSI

You can use Microsoft Windows installer service (Msiexec.exe) and a package file (appmgr.msi) to install App-Control on Windows 2000 and XP operating systems. Windows 98 also supports Microsoft Windows Installer technology, but requires that you install it separately.

This technology is intended primarily for use in systems that support remote installation via command line, such as Microsoft SMS, Altiris Deployment Solution, and others. The package file (appmgr.msi) may be placed in a shared directory as defined by these systems, and executed remotely on supported computers.

Before installation verify that the Install Shield script engine is installed on the computer. To install ISScript1050, use the following string:

```
msiexec /qn /i <pathname>\ISScript1050.Msi
```

To install the App-Control package file locally on a Windows-based computer, open the Command Prompt window and type the appropriate command line parameters. For example, to install App-Control in quiet mode (no user interaction) on a teacher computer, use the following string:

```
msiexec /qn /i <pathname>\appmgr.msi
```

where <pathname> is the directory path that contains the package appmgr.msi.

To uninstall App-Control, use the following string:

```
msiexec /qn /x {F1532CF2-03A9-47CE-BB32-CE0400E4CFE7}
```

For a list of Windows Installer parameters, type msiexec at the command prompt. App-Control parameters are described below.

Property Name	Meaning	Value
AMSERIAL ^a	License number required to activate Vision on the teacher computer.	<assigned by GenevaLogic>
USERNAME	Registered user name.	<user defined>
COMPANYNAME	Registered company or school name.	<user defined>

a. Required parameter

Set Up App-Control

Add Applications to the App-Control Menu

App-Control allows you to create a menu of the applications that you want to start on student computers. By adding the applications you use most often to the App-Control menu, you can quickly start them on student computers without typing the name of the program or searching for its executable file.

NOTE: The applications you add to the menu must be installed on both the instructor and student computers in order to start them with App-Control.

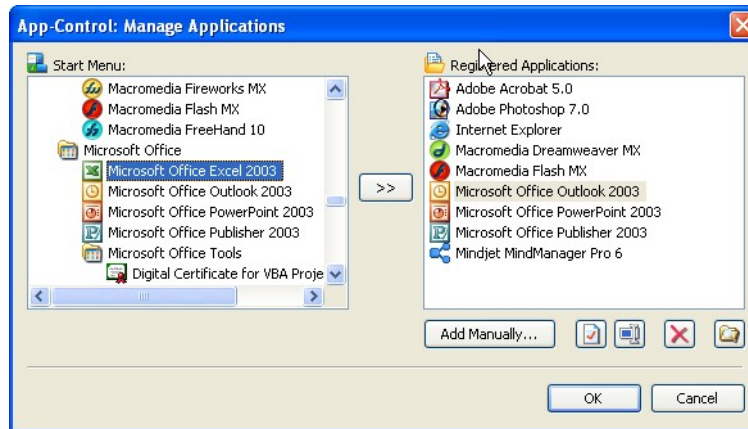
1. On the Vision toolbar click the **App-Control** button, and then click **Manage Application List**.



App-Control menu: No applications have been added to the list.

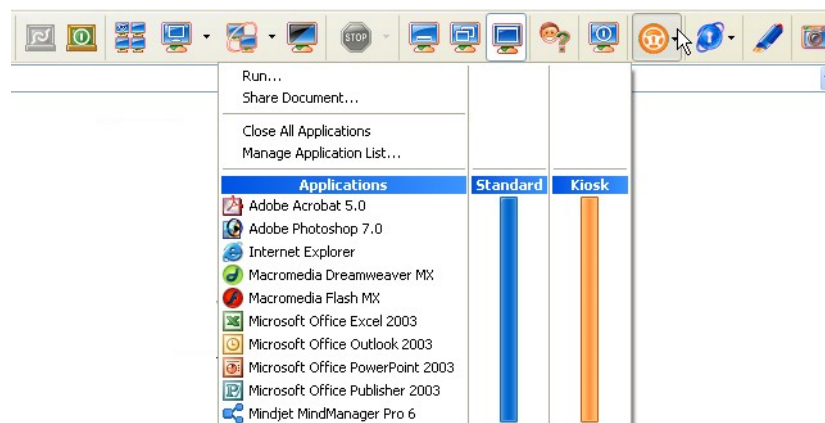
2. To add an application to your App-Control menu, do one of the following:
 - In the **Start Menu** list, select the application you want, and then click the **Right Arrow** button (>>).
 - Click **Add Manually** and locate the application executable file (.exe).

App-Control adds the program to the list of Registered Applications.



Manage Applications window: Select an application, and then click the arrow button to add it to the list of Registered Applications.

3. Click **OK** to save your changes. The applications you added are now available from the App-Control menu in Vision.

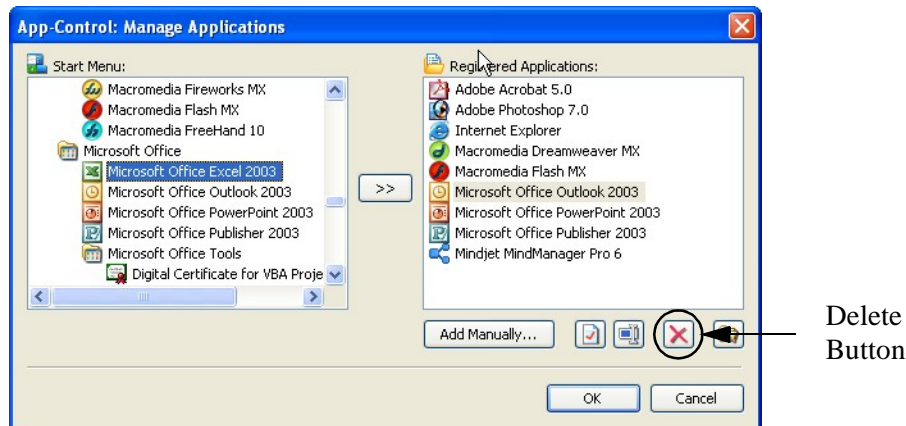


App-Control menu with added applications.

Remove Applications from the App-Control Menu

You can remove applications you no longer want to appear on the App-Control menu.

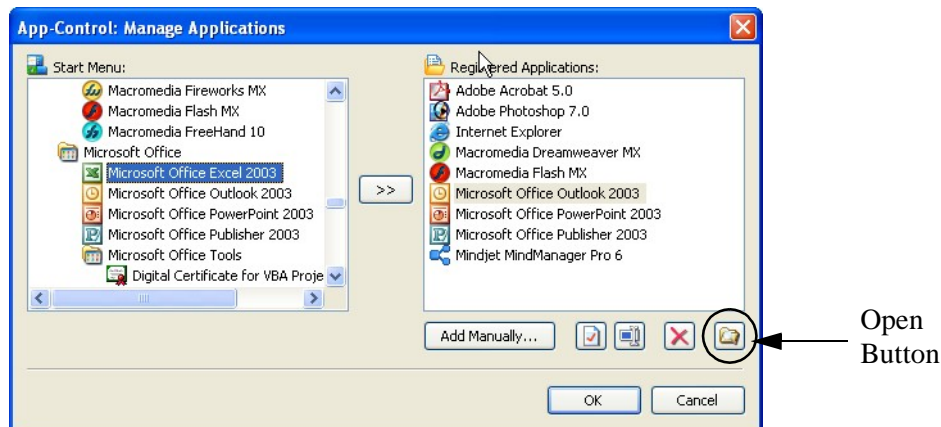
- In the **Manage Applications** window, under **Registered Applications**, select the application you want to remove from the App-Control menu and click the **Delete** button.



View App-Control Shortcuts

When you add an application to the App-Control menu, you create a shortcut to that application, which you can view in Windows Explorer.

- Open the **Manage Applications** window, and then click the **Open** button. The shortcuts directory opens in Windows Explorer.



Working with Student Computers

Start an Application on Student Computers

When you select an application to share with your class, you can choose to give students access to their computers while they use it (Standard mode) or you can start the application in Kiosk mode. Kiosk mode allows students to use all the functions of the selected application while it prevents them from accessing other areas of their computers.

For example, when you start Microsoft Word in Kiosk mode, students are limited to using that application. The students see only Word on their desktops. They do not have access to other applications: the Start menu is not available; the taskbar at the bottom of the screen is locked; and students cannot launch Windows Explorer to search for other programs.

1. On the Vision toolbar click the **App-Control** button.
2. Under **Applications** find the program you want and click the corresponding start button.
 - To allow students to close the application or start other applications while they work, click the start button under the **Standard** heading.
 - To prevent students from closing the application or working with other applications, click the start button under the **Kiosk** heading.



Application menu:
Select the application you want and the mode in which you want it to start: Standard or Kiosk.

When you start a program in Kiosk mode, an orange Kiosk badge appears on the student computers in the dashboard.



TIP: You can start more than one application in Kiosk mode.

Turn Off Kiosk Mode

You can switch an application from Kiosk mode to Standard mode without closing the application. For example, during a lesson using Microsoft Word you may start the program in Kiosk mode to keep the class on track. When you finish your lesson, you can turn off Kiosk mode without closing the program. Students can continue working in Word or, if they choose, start other programs.

- On the Vision toolbar click the **Stop** button.



Close All Applications Running on a Student Computer

You can close all the programs running on student computers at one time. This is helpful when you want to prepare for the next part of the lesson or the next class period.

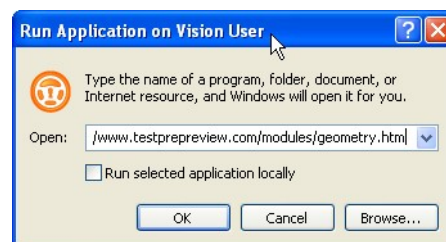
- Click the **App-Control** button, and then click **Close All Applications**. If students have any work in progress, they will be asked to save it before the application closes.



Start an Application Using the Run Command

You can use the Run command to start an application on a student computer. The Run command does not require you to add an application to the App-Control menu before you can start it remotely.

- On the Vision toolbar click the **App-Control** button, and then click **Run**. The **Run Application** window opens.



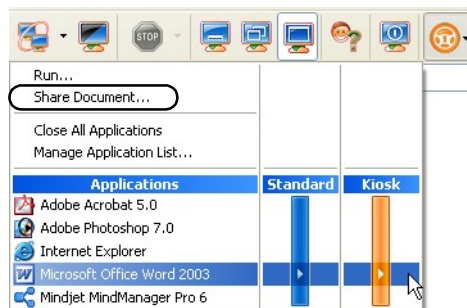
- Start an application or open a Web site in one of the following ways:
 - Type the executable name of the application, such as Excel.exe for Microsoft Excel, or the address of the Web site.
 - Drag an application shortcut from the **Start** menu, or a Web address from a browser address bar, to the **Open** box.
 - Click the down arrow to choose from a list of programs and Web sites you have used previously.
- (optional) If you want to start the program or open the Web site on your computer, select the **Run selected application locally** check box.
- Click **OK**.

Share a Document with Your Students

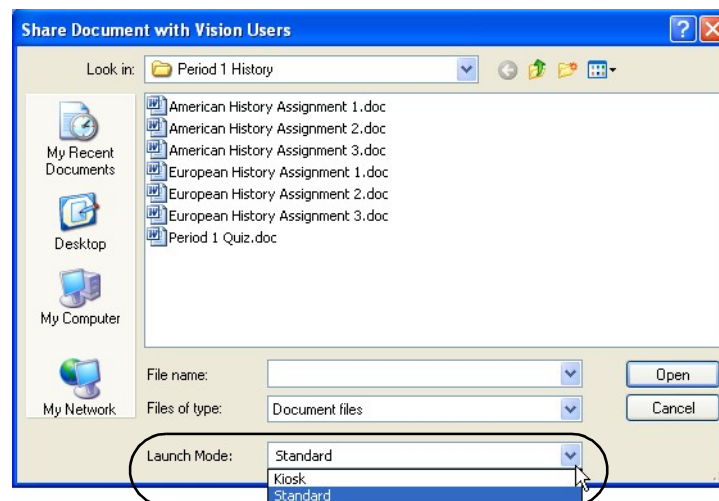
In addition to starting a program on your student computers, you can also open documents that you want to share with your classroom. This is helpful when you want to distribute a worksheet or other assignment electronically.

When you select a document and share it with your class, App-Control opens a copy of that document on each student computer.

1. On the Vision toolbar click the **App-Control** button, and then click **Share Document**.

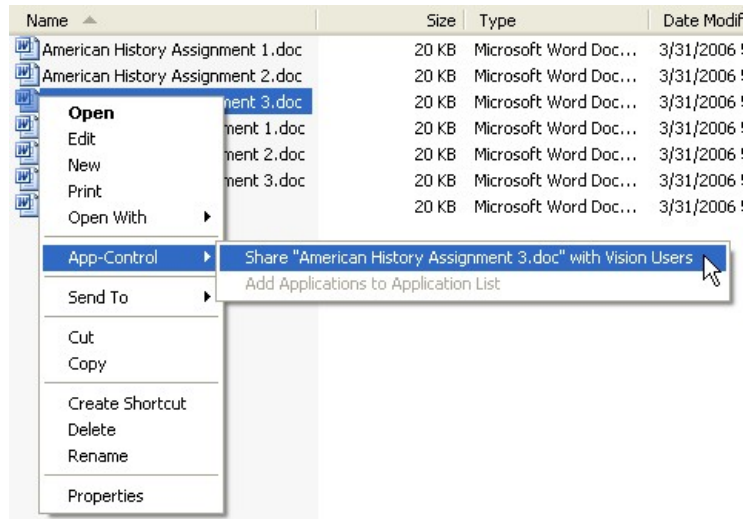


2. Select the document file you want to share, and then select a Launch Mode, Standard or Kiosk.
 - To allow students to close or start other applications while they work with this document, choose Standard.
 - To prevent students from closing or starting applications while they work with this document, choose Kiosk.

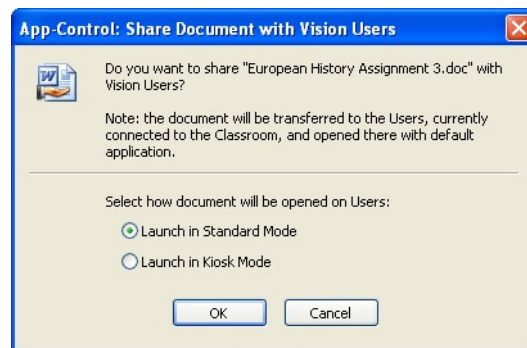


3. Click **Open**. A copy of the document opens on the student computers.

TIP: Another way to share a document is to right-click a document file, point to App-Control on the shortcut menu, and then click **Share [document name] with Vision users**. Next, select the document Launch mode, Standard or Kiosk, and a copy of the document opens on the student computers.



The **Share Document** command is available when you right-click a document file.



You can select either Standard or Kiosk mode for the document.

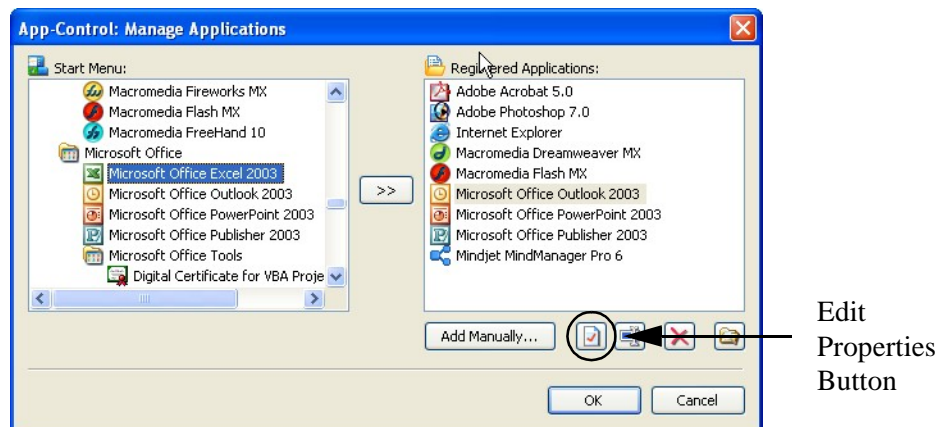
Customize App-Control

Change the Icon Associated with an Application

1. On the Vision toolbar click the **App-Control** button, and then click **Manage Application List**.



2. In the **Registered Applications** list, select the application you want and then click the **Edit Properties** button.



3. In the application **Properties** window, click **Change Icon**.
4. In the **Change Icon** window, select an icon from the list, or click **Browse** to search for a different icon.
5. Click **OK** to save your changes.

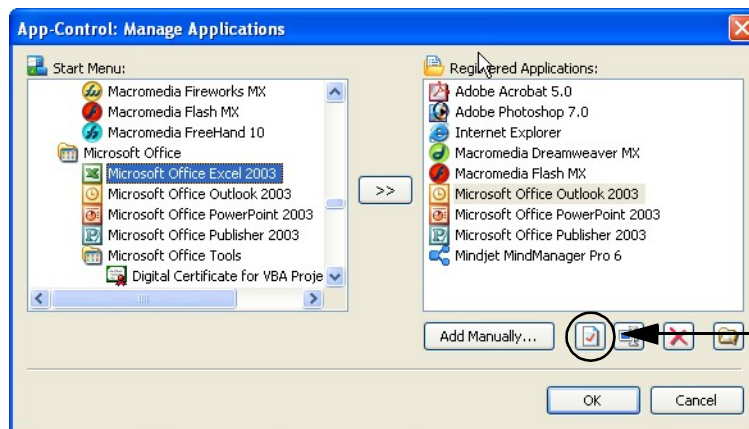
Change the Window Size of an Application

You can change the size of an application window that appears on student computers. For example, you can configure Microsoft Word to appear in window that covers the entire student screen or is minimized to a button on the student taskbar.

1. On the Vision toolbar click the **App-Control** button, and then click **Manage Application List**.



2. In the **Registered Applications** list, select the application you want and then click the **Edit Properties** button.



Edit
Properties
Button

3. In the application **Properties** window, select a window size from the **Run** box:
 - Normal window
 - Minimized
 - Maximized
4. Click **OK** to save your changes.

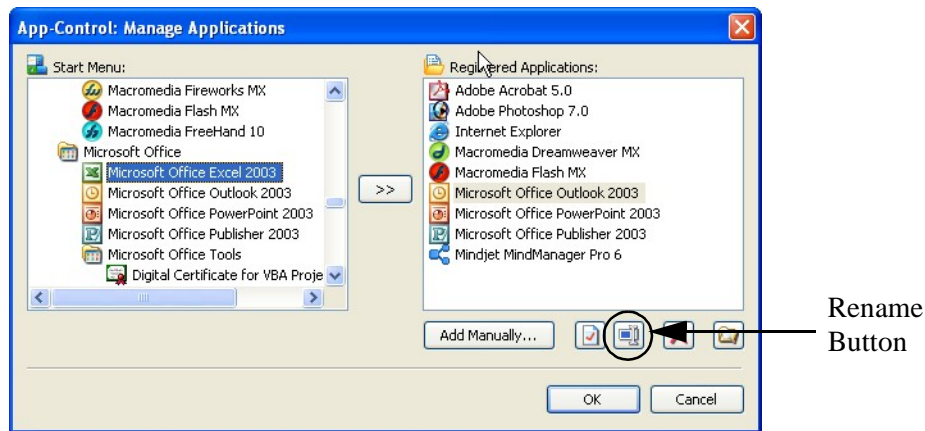
Rename a Program in the App-Control Menu

You can rename the applications that appear in the App-Control menu.

1. On the Vision toolbar click the **App-Control** button, and then click **Manage Application List**.



2. In the **Registered Applications** list, select the application you want to rename, and then click the **Rename** button.



3. Type the name that you want to appear for this application.
4. Click **OK** to save your changes.